

DESCRIPTION/APPLICATION

Thomas & Betts provides a unique plug-in socket line allowing quick connection of circuits simultaneously without the use of tools.

They are designed to be wave-soldered to a PC board, after which the connector is plugged into the socket.

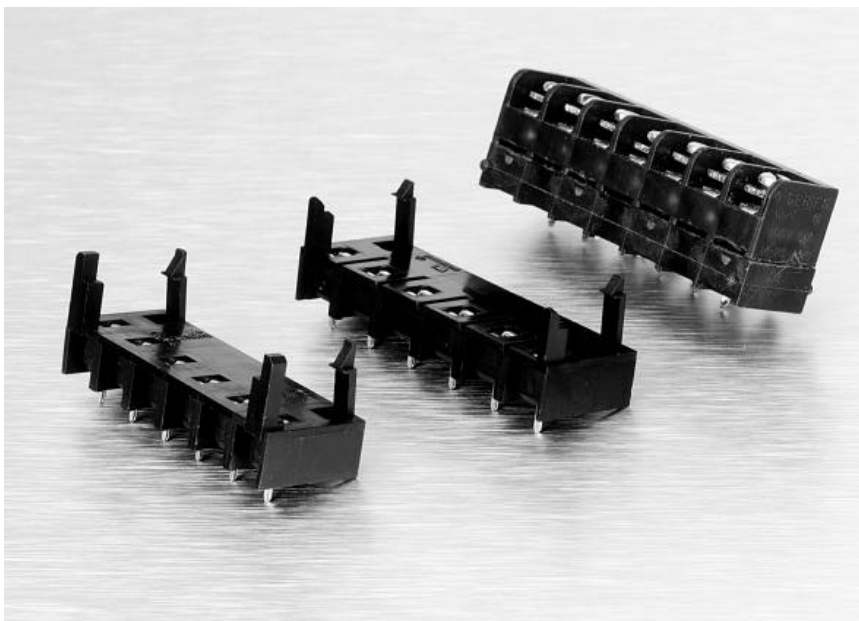
Mateability for the socket line is given below:

SOCKET SERIES	CONNECTOR SERIES
USB	RSB3, SSB3
4DTB	#4
RSB6B	RSB6
6DTB	#6

DESIGN ADVANTAGES

- End to end mounting of USB sockets maintain circuit spacing: Two 12 circuit USB sockets can mate with one 24 circuit SSB3 or RSB3.
- Secure mating with built-in locking arms
- High vibration versions with high withdrawal force available: Series 4DTB and 6DTB.

BARRIER STRIP SOCKETS



CONNECTOR INDEX	
0.325" Pitch, Series USB for RSB3 and SSB3	108
0.325" Pitch, Series 4DTB for #4, High Vibration Version..	109
0.375" Pitch, Series RSB6B for RSB6	110
0.375" Pitch, Series 6DTB for #6, High Vibration Version..	111

0.325" PITCH SERIES USB SOCKET FOR SERIES RSB3 AND SSB3

PHYSICAL PROPERTIES

HOUSING MATERIAL: Polyamide, Type 6/6
FLAMMABILITY: UL94V-2
COLOR: Black

TERMINAL

TERMINALS CONTACT: Copper alloy, bright tin plating
PIN: Copper alloy, bright tin plating

MECHANICAL

PITCH (TERMINAL SPACING): 0.325"
RECOMMENDED PCB HOLE DIA.: .055"
PULLOUT FORCE: 5-7 lbs.

ELECTRICAL PROPERTIES

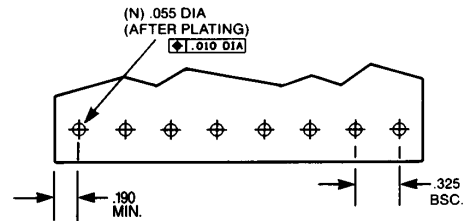
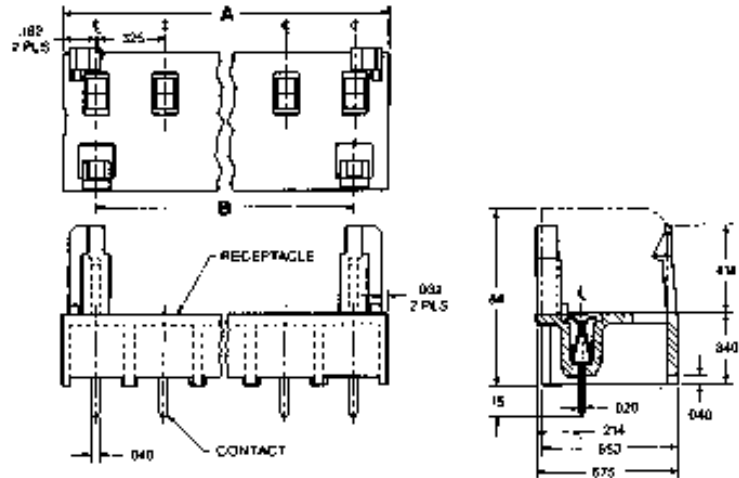
MAXIMUM CURRENT: 10A
OPERATING VOLTAGE: 300V
DIELECTRIC WITHSTAND: 3500V

ENVIRONMENTAL PROPERTIES

OPERATING TEMPERATURE RANGE: -60°C to +105°C
(-76°F to +221°F)



USB3B08S & SSB3FP080202



Recommended PCB Hole Pattern

Ordering Information and Mating Table

CATALOG NUMBER	NO. OF CIRCUITS	DIMENSION A	DIMENSION B	MATING STRIP CATALOG NUMBER	MATING STRIP CATALOG NUMBER
USB3B02S	2	.650	.325	SSB3FP0202...	RSB3VP0212...
USB3B03S	3	.975	.650	SSB3FP0302...	RSB3VP0312...
USB3B04S	4	1.300	.975	SSB3FP0402...	RSB3VP0412...
USB3B05S	5	1.625	1.300	SSB3FP0502...	RSB3VP0512...
USB3B06S	6	1.950	1.625	SSB3FP0602...	RSB3VP0612...
USB3B07S	7	2.275	1.950	SSB3FP0702...	RSB3VP0712...
USB3B08S	8	2.600	2.275	SSB3FP0802...	RSB3VP0812...
USB3B09S	9	2.925	2.600	SSB3FP0902...	RSB3VP0912...
USB3B10S	10	3.250	2.925	SSB3FP1002...	RSB3VP1012...
USB3B11S	11	3.575	3.250	SSB3FP1102...	RSB3VP1112...
USB3B12S	12	3.900	3.575	SSB3FP1202...	RSB3VP1212...

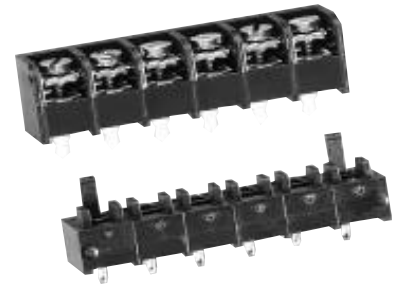
NOTE: Mating SSB3 Barrier Strips require printed circuit pin terminal style "02."
Mating RSB3 Barrier Strips require printed circuit pin terminal style "12."



LR49571 E60980

BUCHANAN.

0.325" PITCH
SERIES 4DTB (FOR SERIES #4)
MATED PAIR ASSEMBLY
HIGH VIBRATION VERSION



4DTB-06-000

PHYSICAL PROPERTIES

Barrier Strip

HOUSING MATERIAL: Polyamide
FLAMMABILITY: UL94V-0
COLOR: Black
TERMINALS: Bright acid tin over copper alloy

Socket

HOUSING MATERIAL: Glass reinforced polyester
FLAMMABILITY: UL94V-0
COLOR: Black
TERMINALS: Bright acid-tin over copper alloy

Mechanical

SCREWS: #4-40 steel, zinc plating with clear chromate coating. Wire clamping screws standard. Binding head screw with undercut optional.
PITCH (TERMINAL SPACING): 0.325" centers
RECOMMENDED PCB HOLE DIA.: .073"

ELECTRICAL PROPERTIES

MAX. CURRENT RATING: 20A
OPERATING VOLTAGE: 150V
WIRE RANGE: 14-22

ENVIRONMENTAL PROPERTIES

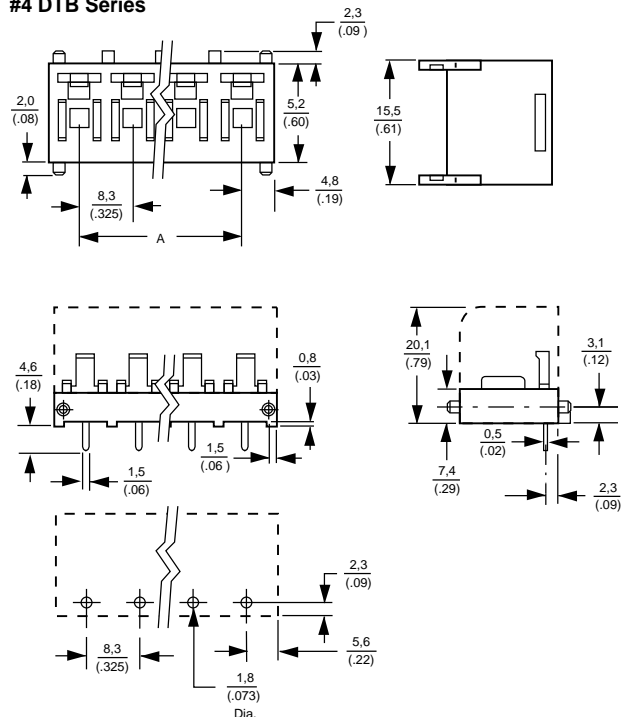
MAX. OPERATING TEMPERATURE:
Socket: 130° C
Barrier Strip: 105° C

ORDERING INFORMATION

4 **DTB** - **06** - **000**

- A** Contact Spacing
4 = 0.325" Centers
- B** Series
DTB = Socket
- C** No. of Circuits (Not positions)
02 through 10
- D** Screw Styles
000 = Slotted head screw with wire clamp plate
006 = Phil-slot head screw with wire clamp plate

#4 DTB Series



Printed Circuit Board Layout

Dimensions

TERMINALS	A
2	(0.325) 8,2
3	(0.65) 16,5
4	(0.97) 24,8
5	(1.30) 33,0
6	(1.63) 41,3
7	(1.95) 49,5
8	(2.28) 57,8
9	(2.60) 66,0
10	(2.92) 74,3

